



## primeTOUCH flat

Quickstart Version 1.0

Date	Revision No.	Author	Checked	Description
20.07.2018	0.0	DWN		First Draft
25.07.2018	1.0		DWN	V 1.0

### Contact

Phone: +49(0)2266-4764-0

E-Mail: [info@solutions4av.com](mailto:info@solutions4av.com)

Web: [www.solutions4av.com](http://www.solutions4av.com)



primeTOUCH flat Quickstart Version 0.0

1. Safety instructions .....3

2. What is primeTOUCH flat? .....3

3. Accessory.....3

4. Installation.....4

    4.1 Connection ..... 4

6. Technical data .....5

7. Drawings .....6

    7.1 primeTOUCH flat 40'' ..... 6

    7.2 primeTOUCH flat 48'' ..... 7

    7.3 primeTOUCH flat 55'' ..... 7

## 1. Safety instructions

- › DO NOT OPEN THE MONITOR. There are no user serviceable parts inside and opening or removing covers may expose you to dangerous shock hazards or other risks. Refer all servicing to qualified service personnel
- › Do not bend, crimp or otherwise damage the power cord. Damage to the cord may cause shock or fire
- › Do not place heavy objects on the screen as this could cause scratches on the front glass or front glass can even break
- › Do not apply pressure to the glass front, the frame or the backside of the display as this could cause malfunction

## 2. What is primeTOUCH flat?

The primeTOUCH flat multi touch displays are based on infrared diode touch technology in combination with professional LC displays. primeTOUCH flat provides an ultra-flat touch surface with anti-glare front glass and a very thin bezel where the small IR diodes find their place. Please also see chapter “7. Drawings” for detailed drawings. As primeTOUCH flat communicates via the HID interface it is a plug&play solution.

**NOTE:** Not all operating systems support HID native touch, so please make sure your PC can handle HID touch. Please see Chapter “6. Technical data” for more information regarding compatibility with operating systems.

## 3. Accessory

Each primeTOUCH flat multi touch display is shipped with the following accessories:

- › Power supply cable for the display



- › Remote control for the display



- › USB cable (USB Type A Male / A Male)



- › USB Stick including this Quick Start Guide, datasheet and display manuals



## 4. Installation

### NOTE:

Not all kind of mechanical installation is allowed.  
Please adhere to the following instructions to prevent damage.

#### Face Up Installation:

Always make sure that the display is mechanically supported in a way that it can't bend or twist. It is recommended to use the VESA mounting holes to mount the display to your construction, additionally the display boarder has to be support by your construction.

Please make sure the Display can endure the way you want to install it, contact us for special installations. In some cases it might be necessary to install additional fans to guarantee a safe ventilation of the display.

Please note the detailed user manual of the used LCD Displays regarding integration and environmental conditions. It is stored at the included USB stick. The following overview shows the assignment of the used LC Displays:

- › primeTOUCH flat 40V – NEC MultiSync V404
- › primeTOUCH flat 40P – NEC MultiSync P404
- › primeTOUCH flat 48V – NEC MultiSync V484
- › primeTOUCH flat 48P – NEC MultiSync P484
- › primeTOUCH flat 55V – NEC MultiSync V554
- › primeTOUCH flat 55P – NEC MultiSync P554

As infrared diode technology can be sensitive to environmental light it's recommended to check the light condition at the installation place in the forefront. Please avoid direct sunlight as this could cause malfunctions.

### 4.1 Connection

- › Connect the power cable to the primeTOUCH display and make sure that you have a stable power supply
- › Connect the signal cable (e.g. Display Port) to the primeTOUCH display and to your PC
- › Turn on display and PC
- › Choose the correct source in the display menu (e.g. Display Port)
- › The picture of the PC should appear
- › Connect one end of the USB cable A-male/A-male to the USB port (A-female) at the lower right corner (Backside View) of the primeTOUCH display and connect the other end to your PC
- › Now the primeTOUCH flat is ready to use (no driver installation necessary)

**NOTE:** If the touch is not working please check the USB connection and possibly change the USB port at the PC. If that doesn't help please replace the USB cable. Please contact us if the problem persists.

## 6. Technical data

### Display

Available sizes	40", 48", 55"
Display resolution	High Definition (HD) 1.920 x 1.080
Basic display	NEC P404, NEC V404, NEC P484, NEC V484, NEC P554, NEC V554
Panel	40", 48": LCD S-PVA with Edge-LED-Backlight
Brightness	40"P, 48"P, 55"P: 665nit (700nit without front glass) 40"V, 48"V, 55"V: 475nit (500nit without front glass)
Digital Video Signal Inputs	2 x DisplayPort (HDCP), 1 x DVI-D (HDCP), 2 x HDMI (HDCP)

### Touch Technology

Technology	Flat IR Touch
Touch inputs	12 simultaneous touch points, up to 50 touch points on request
Input method	Finger, glove, pen etc.
Touchfidelity	Less than 0.5mm
Minimum detectable object	1.5mm
Sample rate	Up to 250Hz
Front glass	Anti Glare, super smooth (etched), tempered safety glass
Communication	USB HID Digitizer (driver necessary in some cases)
Connection	USB A female connector (USB 2.0 Full Speed)
Native driver support	Windows 7/8/10, Mac OS X, Linux on request, Android on request
Touch data output	HID, native Windows Multitouch, TUIO

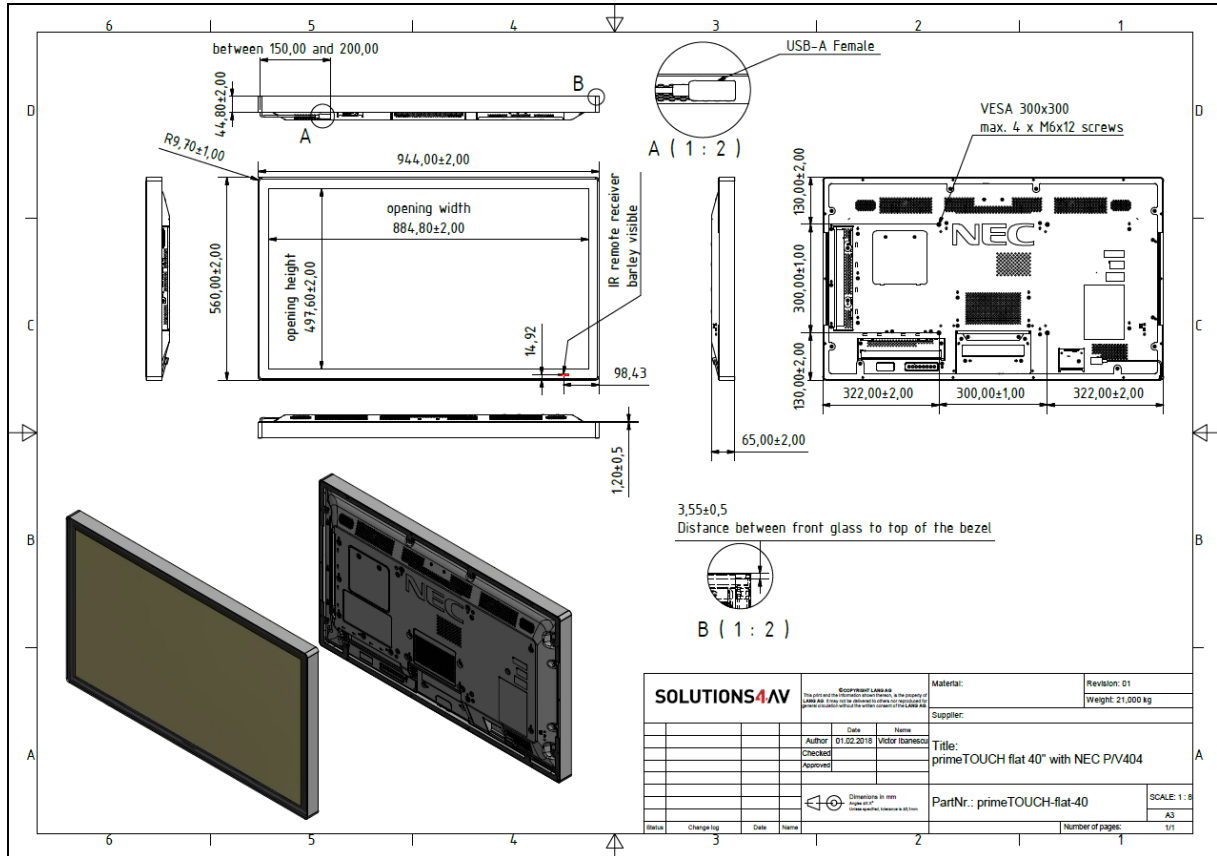
### Installation/Operation

Operating temperature	0°C to +35°C
Operating humidity	20%RH to 80%RHf
Orientation	Landscape, Portrait, Face-Up *1
Operating time	24/7
Warranty	24 months, excluding USB connectors

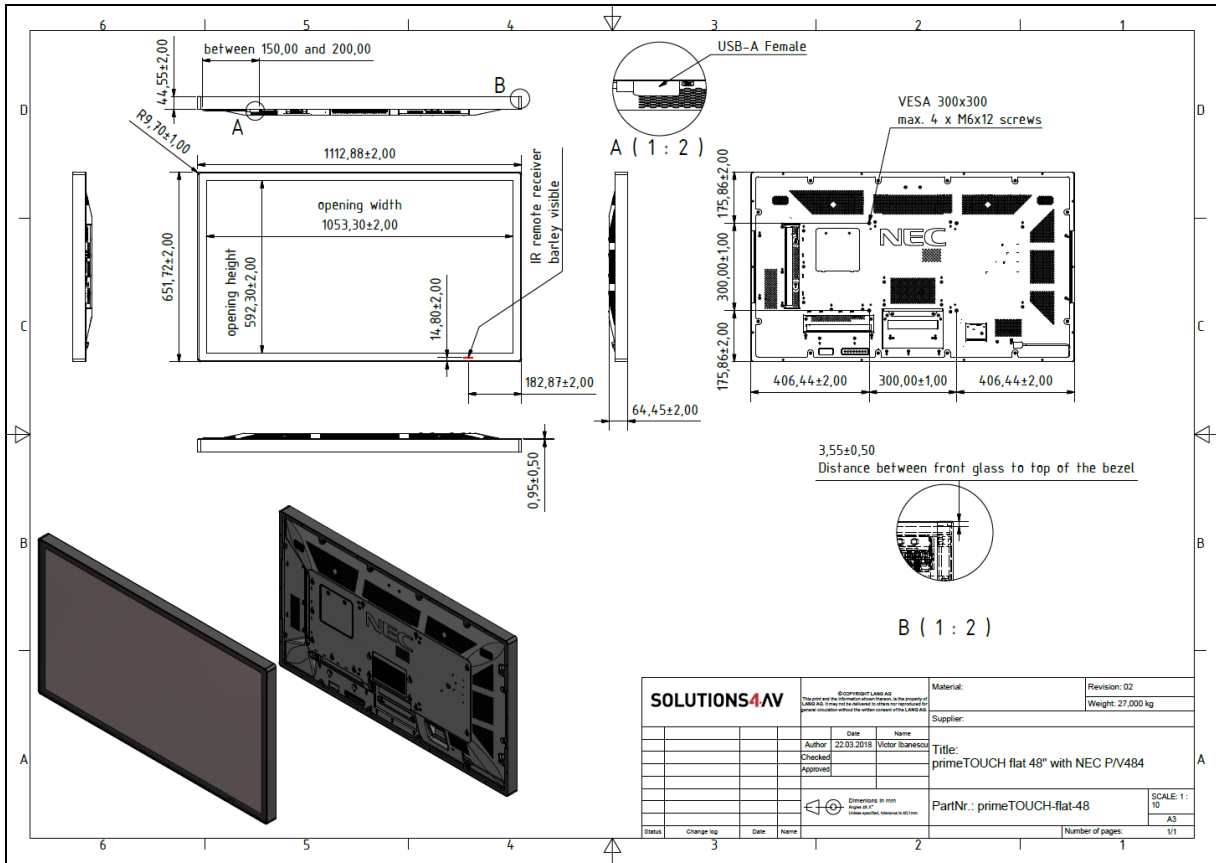
\*1 For face up installation display fan settings set to ON and speed to HIGH, brightness set to max 70%. Make sure the environment/housing is well ventilated and cooled

## 7. Drawings

### 7.1 primeTOUCH flat 40''



## 7.2 primeTOUCH flat 48"



## 7.3 primeTOUCH flat 55"

